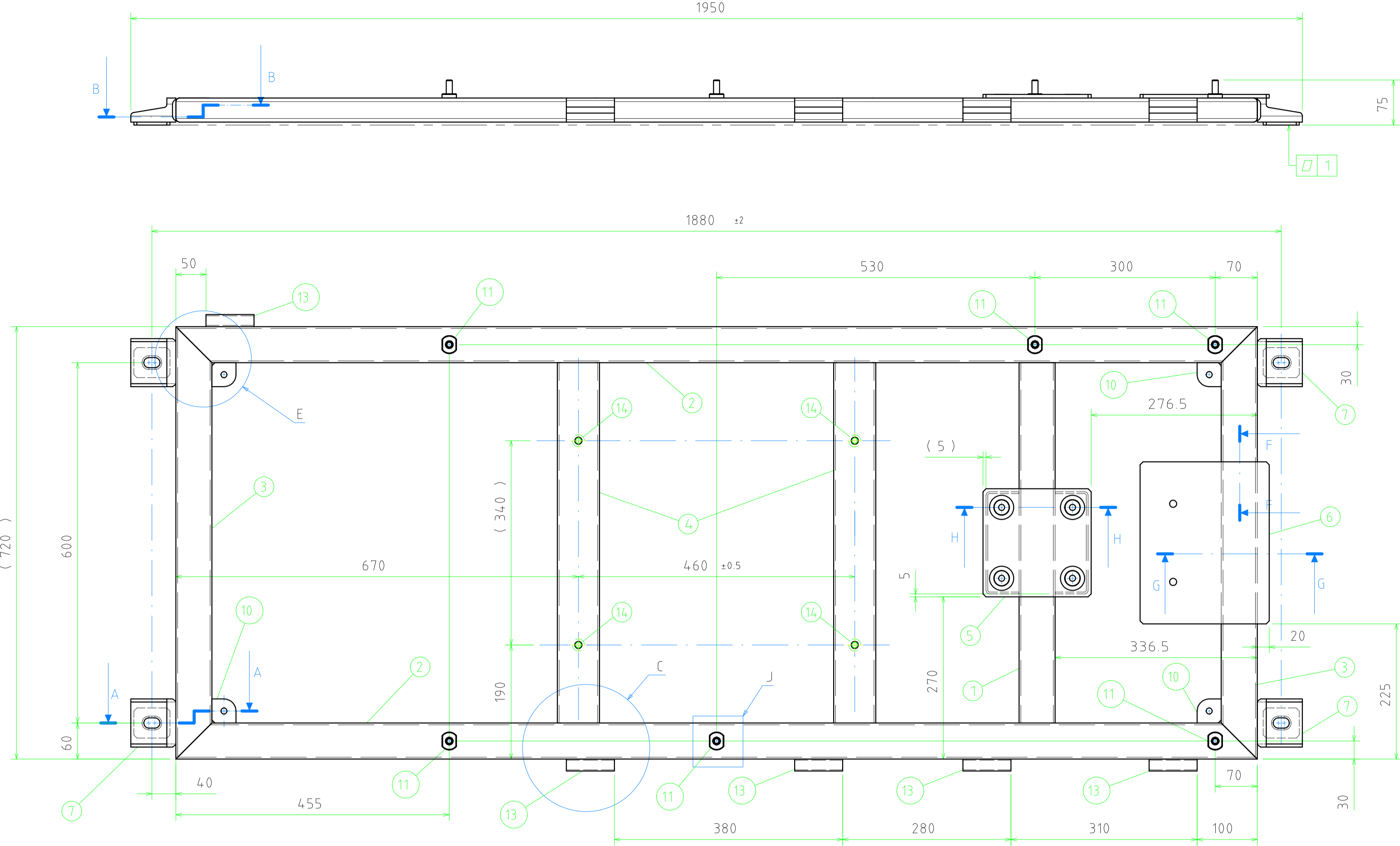
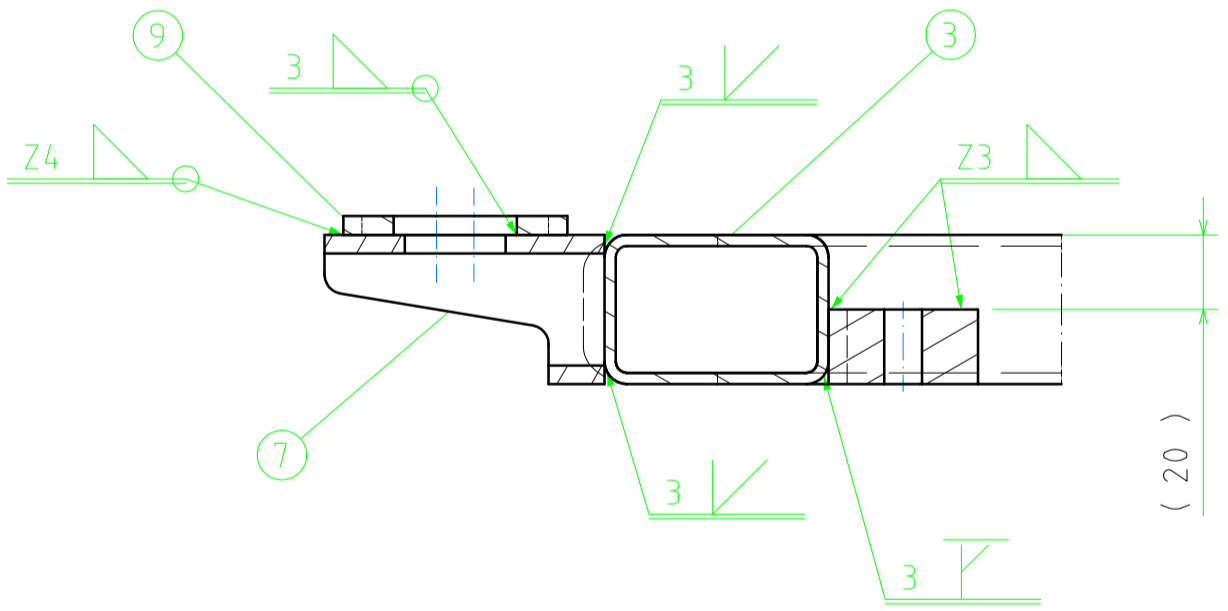


Reproduction, dissemination or use of this document or its contents in any form without the prior written permission of TURASAS is prohibited. Offenders will be liable for the payment of damages. All rights reserved in the event of the part of a patent, utility model or industrial design being registered.

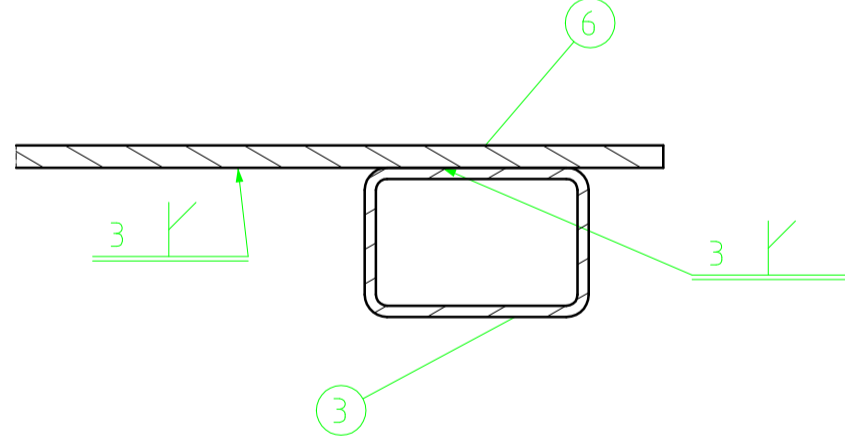
ISO 2190 Steel Casting			
+	mm	mm	mm
>1000	6,0	0,8	
>630	4,0	0,7	
>400	3,0	0,6	
>250	3,0	0,4	
>100	2,0	0,3	
>40	1,5	0,2	
L mm	mm	mm	mm
ISO 2188 Steel Casting			
+	mm	mm	mm
Nom. Size	Class		
>20000	9,0	8,0	
>20000	8,0	7,0	
>16000	7,0	6,0	
>12000	6,0	5,0	
>8000	5,0	4,0	
>4000	4,0	3,0	
>2000	3,0	2,0	
>1000	2,0	1,5	
>400	1,0	1,0	
>30-120	1,0	0,5	
>2-30	1,0	0,5	
L mm	mm	mm	mm
ISO 15920 Welded Construction			
+	mm	mm	mm
Nom. Size	Class		
>20000	9,0	8,0	
>20000	8,0	7,0	
>16000	7,0	6,0	
>12000	6,0	5,0	
>8000	5,0	4,0	
>4000	4,0	3,0	
>2000	3,0	2,0	
>1000	2,0	1,5	
>400	1,0	1,0	
>30-120	1,0	0,5	
>2-30	1,0	0,5	
L mm	mm	mm	mm



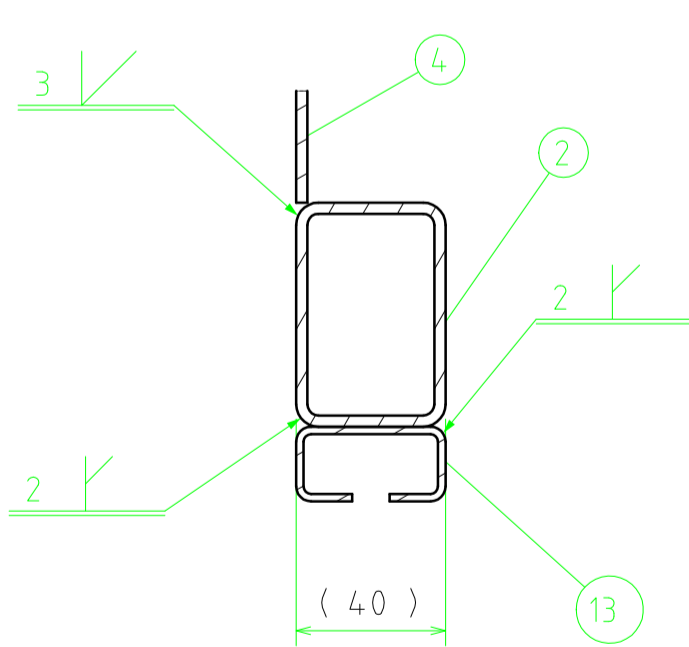
Section view A-A
Scale: 1:2
(Typical)



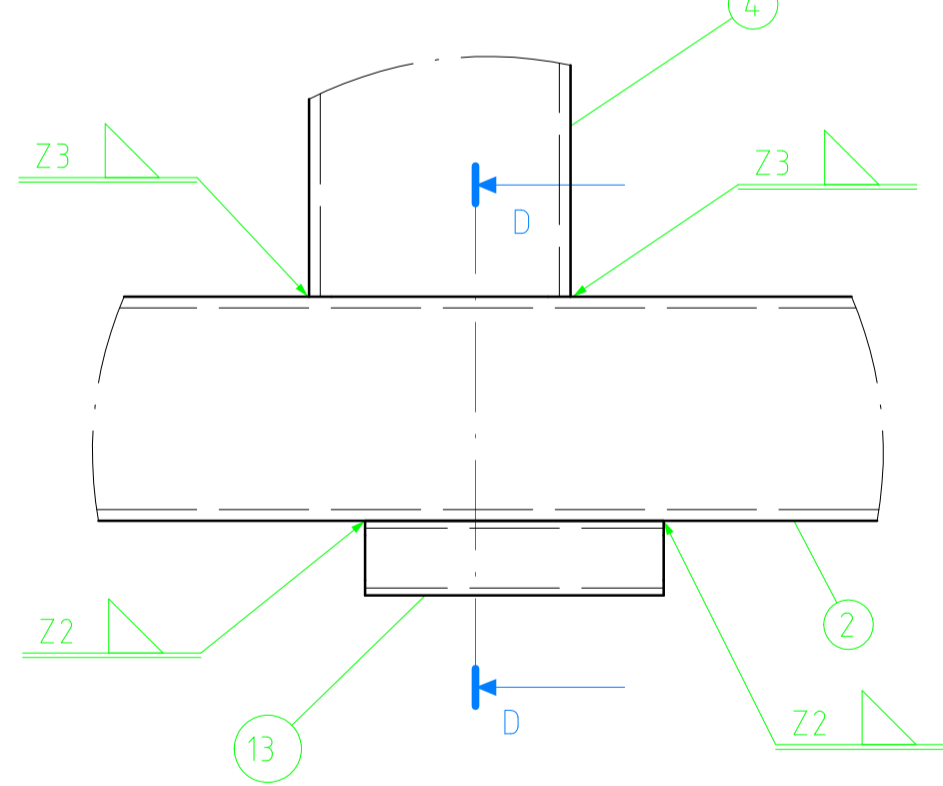
Section cut G-G
Scale: 1:2
(Typical)



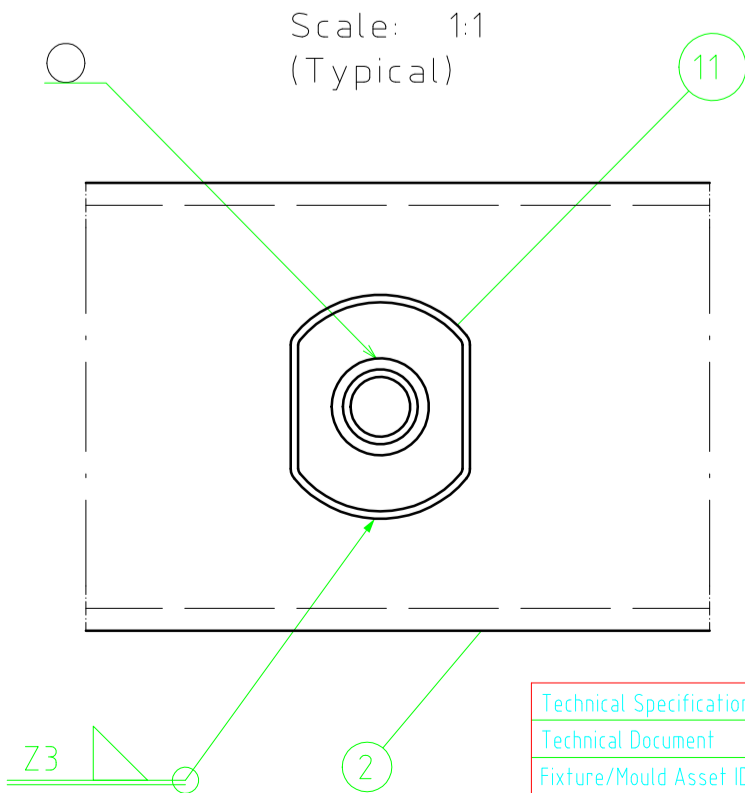
Section cut D-D
Scale: 1:2
(Typical)



Detail C
Scale: 1:2
(Typical)



Detail J
Scale: 1:1
(Typical)



Painting in accordance with TD-GZ.10.0055
-Protect from painting all threaded holes and machined surfaces marked with
-Protect only with primer all surfaces marked with

GENERAL WELDING REQUIREMENTS

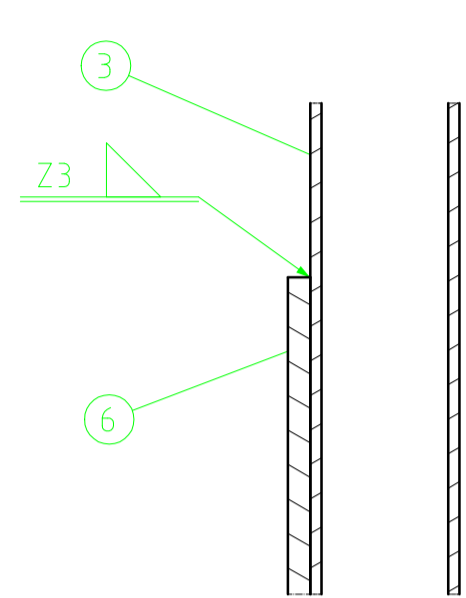
Welding classification and controlling according to technical specification BLUE_TS_WLD_01

WELDING PERFORMANCE CLASS

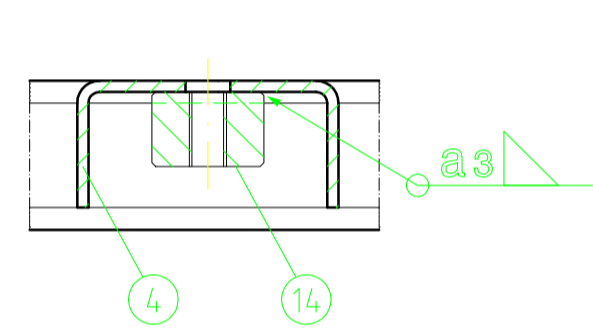
CP C2

Technical Specifications	Technical Document	Fixture/Mould Asset ID	Coating/Heat Treat/Roughness	Paint/Color
11829	Drawing Update	29/11/2024		
Mod. No	Modification Description	Date	Sign	

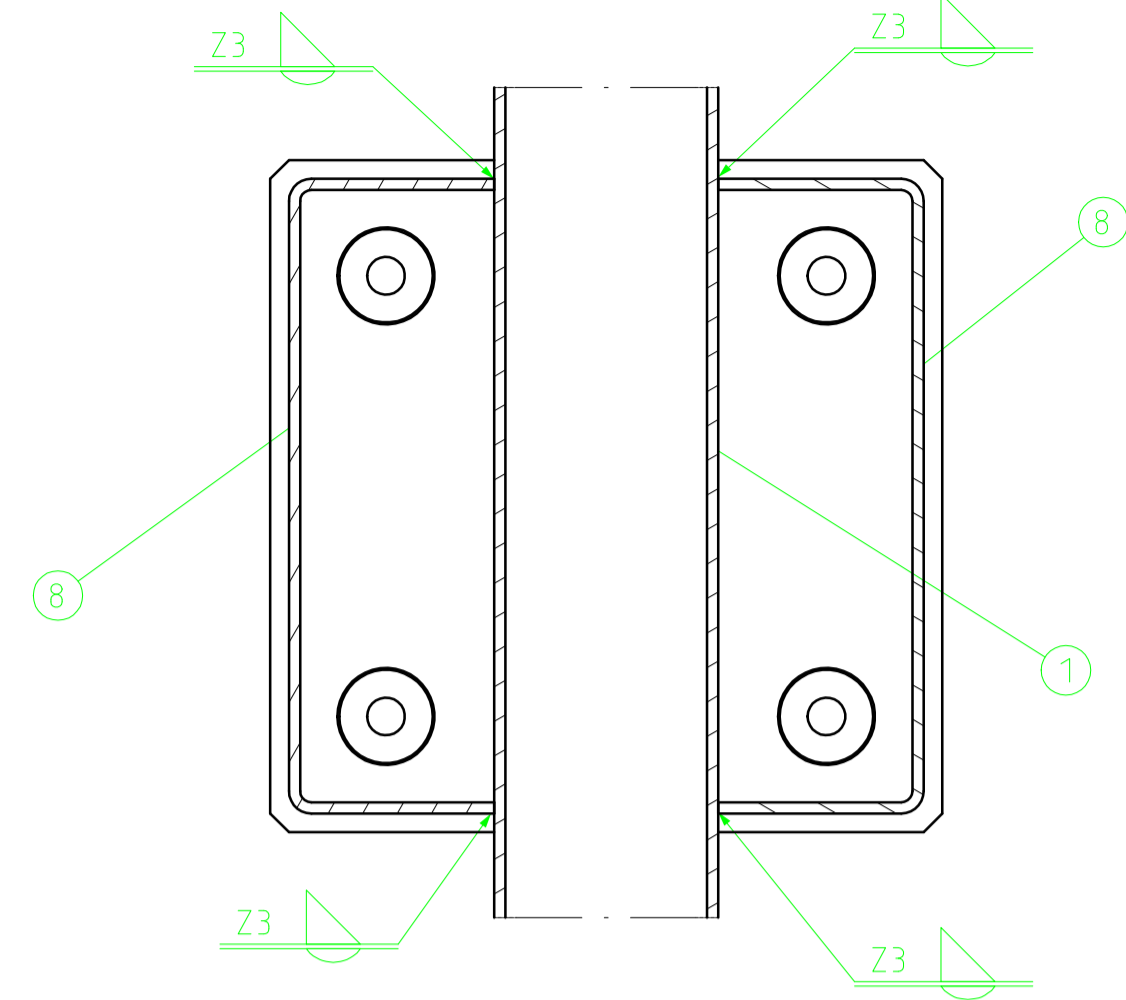
Section cut F-F
Scale: 1:2
(Typical)



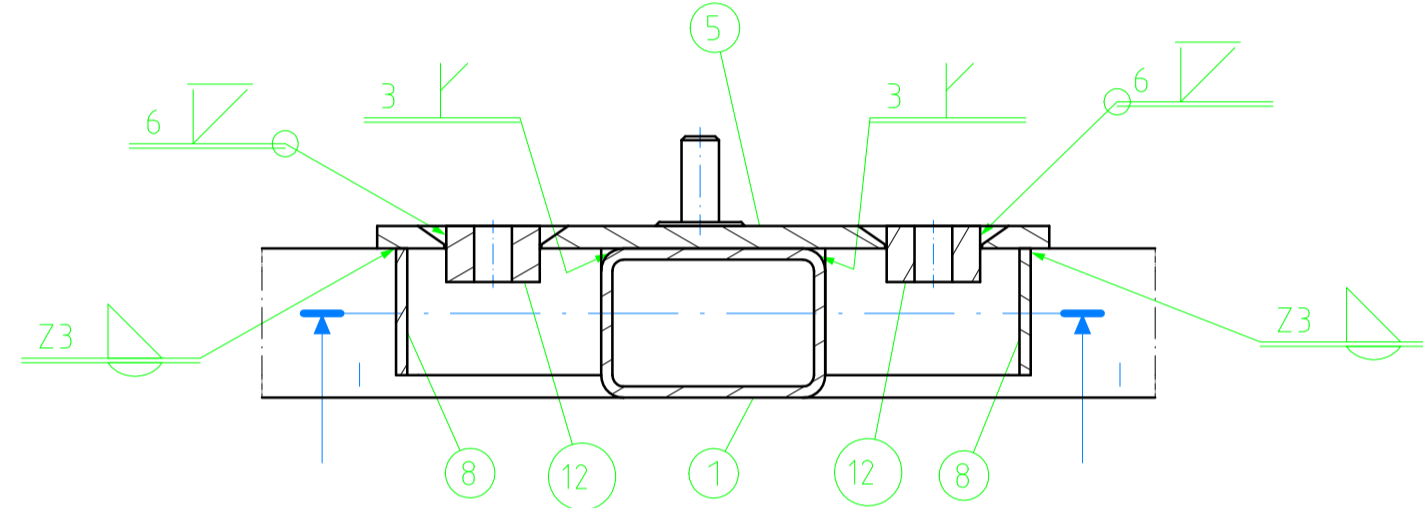
Section cut K-K
Scale: 1:2
(Typical)



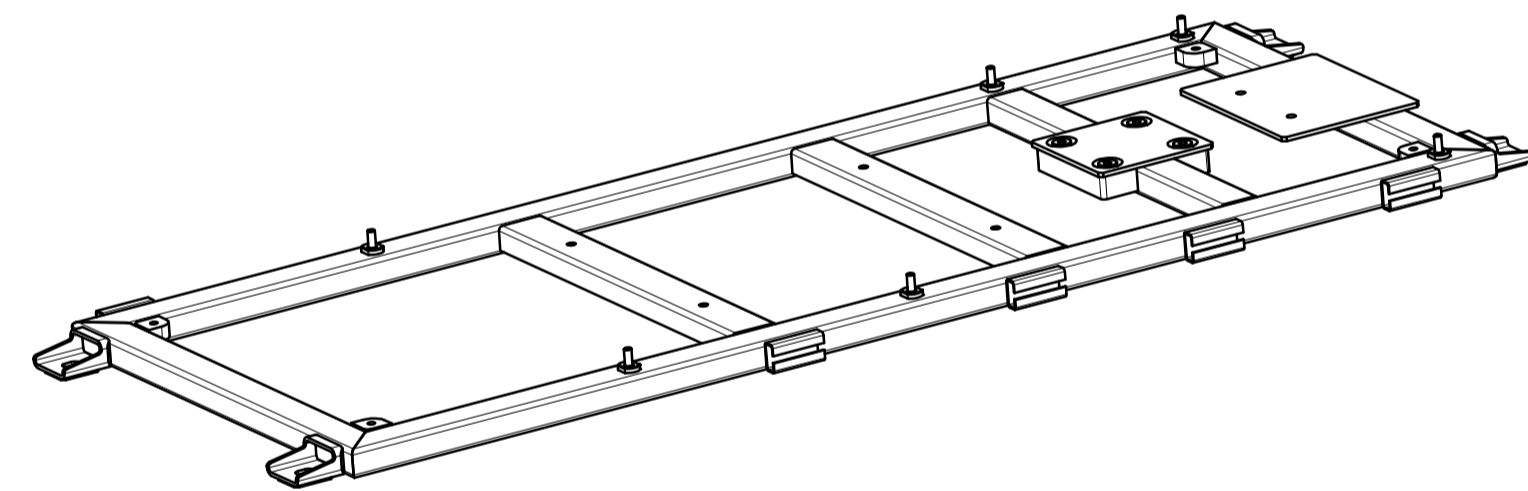
Section view I-I
Scale: 1:2
(Typical)



Section view H-H
Scale: 1:2
(Typical)



Isometric view



No	Parça Adı Designation Name of Item	Adet Qty	Resim No / Norm Drawing No / Norm	Malzeme Material	Ölçü Dimension	Ağırlık Weight (kg)
14	Baga	4	EM20.07.17.10023	S355J2 EN10025	-	
13	Bending_Sheet	5	GZ11.07.22.10006	S355J2 EN10025	-	0,122 kg
12	Block	4	GZ11.07.24.10009	S355J2 EN10025	-	0,048 kg
11	Block	6	GZ10.07.07.10005	X5CrNi 18-10 EN10088	-	0,048 kg
10	Block	4	GZ10.07.07.11006	S355J2 EN10025	-	0,224 kg
9	Plate	4	GZ10.07.07.11004	S355J2 EN10025	-	0,091 kg
8	Bending sheet	2	GZ11.07.24.10008	S355J2 EN10025	-	0,217 kg
7	Tube	4	GZ11.07.24.10007	S355J2H EN10210	-	0,346 kg
6	Plate	1	GZ11.07.24.10006	S355J2 EN10025	-	2,728 kg
5	Plate	1	GZ11.07.24.10005	S355J2 EN10025	-	1,498 kg
4	Bending sheet	2	GZ11.07.24.10004	S355J2 EN10025	-	1,81k g
3	Tube	2	GZ11.07.24.10003	S355J2H EN10210	-	2,809 kg
2	Tube	2	GZ11.07.24.10002	S355J2H EN10210	-	7,406 kg
1	Tube	1	GZ11.07.24.10001	S355J2H EN10210	-	2,554 kg
						34,5

No	Parça Adı Designation Name of Item	Adet Qty	Resim No / Norm Drawing No / Norm	Malzeme Material	Ölçü Dimension	Ağırlık Weight (kg)
ISO 2190-1	ISO 815	ISO 2553	General Tol	ISO 2768	ISO 2768	ISO 2768
EN 15085-2 Certification Level	CL1 CL2 CL3	Weld Pro	Cast Steel	ISO 13920	ISO 12708	ISO 12708
Approved	L Giovannozzi	12/04/2023	Scale			
Checked	M.Borlu	12/04/2023	15			
Prepared	M.Coşar	12/04/2023				
HV_Disconnector_Frame						
GZ11.07.24.10000						
Sheet	V1	Size	A1	Rev	01	

TURASAS
Turkish Railway Vehicles Industry Inc.